



www.equinethermography.co.uk

Equine Thermal Imaging

a leading edge technology for the benefit of horses and their owners.

Is your horse completely happy with his saddle?

Do you suspect pinching or pressure points?

Is your horse difficult to get the right saddle fit for?

A new way of supporting correct saddle fitting....using infrared thermal technology

Do you want?

- A quick, easy and safe method
- Direct visual evidence of how your saddle sits
- To take out the guesswork
- Results you can see.
- Information you can act upon

How it works:

Infra-red thermography is a completely non-invasive, non-touch method of showing hot and cold spots which provides you with factual information.

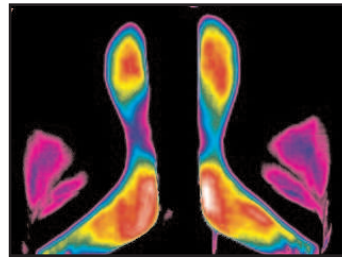
What will I get?

- You will get an excellent, real-time representation of contact and pressure areas on the underside of your saddle and the back of your horse post lunge or similar.
- On the day you will receive postcard sized print outs of images - with temperature comparisons if required.

Guaranteed Satisfaction!

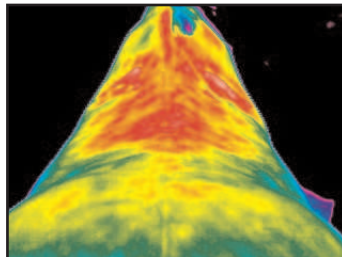
Money back guarantee.

www.equinethermography.co.uk
www.joosborne.co.uk



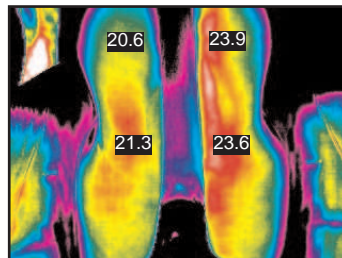
Top Image:

This saddle is bridging; you can clearly see that the pressure is sitting at 4 distinct points.



Middle Image:

The correlating back images immediately after removal of this saddle; we can see if and where the saddle is pinching or moving.



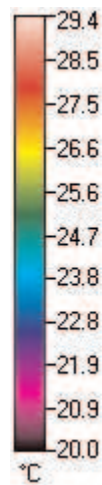
Bottom Image:

Pressure is being borne down through the right panel.

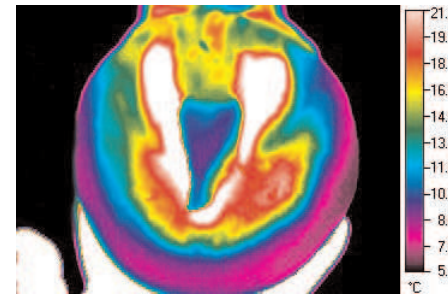
Call
01483 414330
07771 870389

Special Offer!
Big Discounts for Group Bookings

- 1-2 horses £45.00 each
- 3-5 horses £40.00 each
- 6-7 horses £35.00 each
- 8+ horses £30.00 each

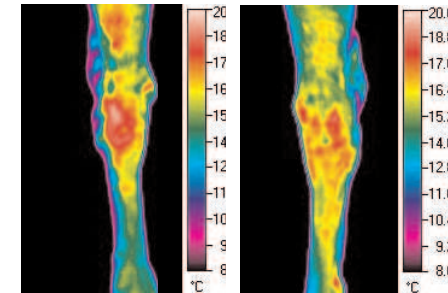


Practical Uses You Should Also Know About...



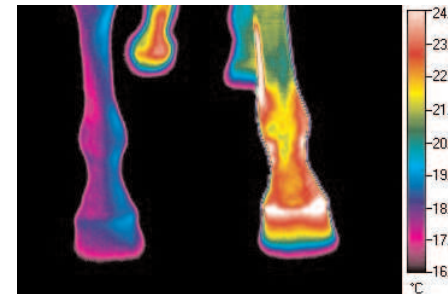
Bruise and Abscess Location

- A quick, easy and effective method of locating the source of the problem.
- Allows you to know where to poultice.
- Reduces the risk of unnecessarily cutting away valuable hoof horn.



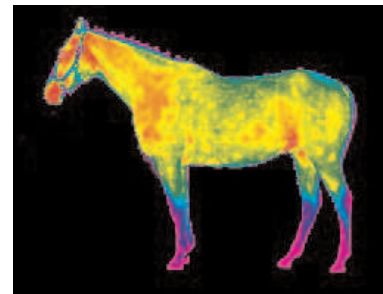
Monitoring Chronic Conditions or Injury sites for activity

- Provides you with an indication of inflammatory responses.
- Will show increased or diminished activity in a site of interest; ie. managing a splint and its return to work or tracking arthritic hocks (pic left).



Revealing unknown issues

- This chronically hot leg was already being addressed by the owner.
- However a relevant consideration was the very cold limb of the RF which only became obvious with the use of infrared thermography.



Whole Body Assessment/ Horse Buyer's Report

- A full body assessment and report.
- Provides further checks on the horse you want to buy.
- Monitoring training impacts and providing additional information to better know your individual horse.
- Investigative work: In-house Vet Thermography Assessment and/or liaising with your vet.

Offering you an affordable and practical service.

www.equinethermography.co.uk
www.joosborne.co.uk